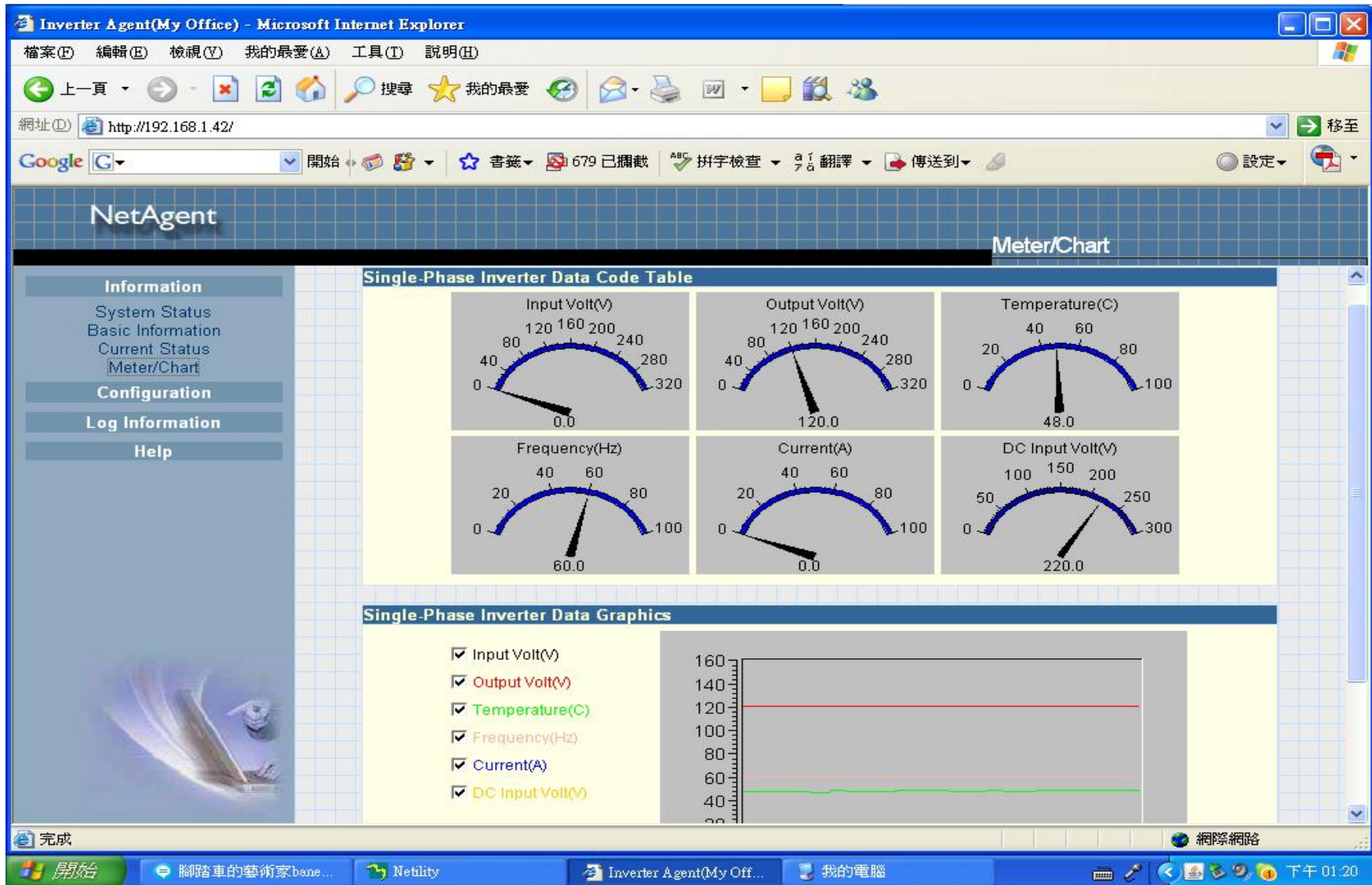


Press the Meter/Chart, customer could read the related information about the working inverter from the following Chart:
input Voltage, output Voltage, Temperature, Frequency, Current and DC input voltage



Press the “Basic Information”, the customer could read the inverter’s model and manufacturer’s information.

NetAgent Basic Information

Information

- System Status
- Basic Information**
- Current Status
- Meter/Chart

Configuration

Log Information

Help

| Inverter Information | |
|---------------------------|----------------|
| Inverter Manufacturer | ASIAN ELECTRON |
| Inverter Firmware Version | REV1.1 |
| Inverter Model | YKPSW3000W |

完成 網際網路

開始 | 腳踏車的藝術家b... | Netlity | 我的電腦 | 新增Microsoft Wo... | Inverter Agent(My ... | 下午 01:22

Press the Current Status, the customer could read the inverter's current status.

The screenshot shows a Microsoft Internet Explorer browser window titled "Inverter Agent(My Office) - Microsoft Internet Explorer". The address bar shows the URL "http://192.168.1.42/". The page content includes a navigation menu on the left with options like "Information", "Configuration", and "Log Information". The main content area is titled "Current Status" and features a "Refresh status every" dropdown set to "10 seconds". Below this, there are three status sections: "Inverter Status" with a red error message "Inverter communication has been lost.", "Input Status" with values for Input Line Voltage (0.0 V) and Battery Voltage (220.0 V), and "Output Status" with values for Output Voltage (120.0 V), Output Frequency (60.0 Hz), Output Current (0.0 A), and Temperature (50.0 °C (122.0 °F)). A "Help" button is located at the bottom right of the status area. The Windows taskbar at the bottom shows the Start button and several open applications, including "Netility" and "Inverter Agent(My ...)", with the system clock showing "下午 01:22".

Information
System Status
Basic Information
Current Status
Meter/Chart

Configuration

Log Information

Help

Refresh status every 10 seconds

Inverter Status Inverter communication has been lost.

Input Status

| | |
|--------------------|---------|
| Input Line Voltage | 0.0 V |
| Battery Voltage | 220.0 V |

Output Status

| | |
|------------------|----------------------|
| Output Voltage | 120.0 V |
| Output Frequency | 60.0 Hz |
| Output Current | 0.0 A |
| Temperature | 50.0 °C (122.0 °F) |

Help